

# ONEMOUNT

UNIVERSAL AV MOUNTING SYSTEMS



Universal wall and ceiling mounting solutions off the shelf and custom engineered to meet all your Audio Visual needs.

- > Secure and robust
- > Easy to install
- > Integrated child safety features
- > Reduces AV equipment theft

The ONEMOUNT range, created in 2001, was established to meet the needs for a "New Zealand appropriate" display mounting system and a universal projector mount.

Our unique offering for flat display screens and fixed ceiling mounts were developed and rapidly grew into an extensive range of quality products for the New Zealand market.

Due to their unique design and fixing points to suit New Zealand construction methodology; our products were adopted by many installers and continue as favourites today. Working closely with installers, new applications have developed and widened our solution base to cover domestic and install professional projector mounts and an extensive user friendly range of flat display mounting systems.

We have also incorporated AV mounting safety and security with a range of products. A smart cable management system with flush-to-wall mounting boxes to neatly contain your cables, and security projector cages that are versatile enough for almost any setting to secure and protect your AV equipment from theft and physical impact damage.

All our products are rigorously tested to ensure their suitability in earthquake zones. As a result, ONEMOUNT has a solution to fit most needs.

Our aim is to provide innovative high quality products, appropriate in function and value to the growing market.



## Contents

### Universal Wall, Ceiling & Floor Mounting Solutions

Fixed Display Mounts	3
Tilt Display Mounts	6
Swing Wall Display Mounts	7
Ceiling Display Mounts	10
Bench & Floor Display Stands	12
Security Options	13
Telescopic Projector Ceiling Mounts	14
Fixed Series Mounts	15
Cable Boxes	18

### ProRack

ProRack Racking Systems	19
ProRack Accessories	20
ProRack Speaker Stands	21
ProRack Commercial Options	22



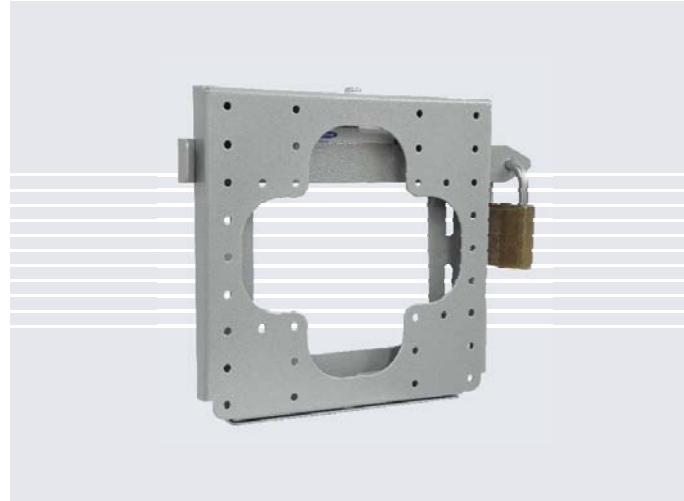


**17" < 32" FLAT SCREENS UP TO 15KG**

This simple VESA 100 bracket has become a standard in NZ through its flexibility of use allowing both tilt and skew for an entry level cost. Wall offset 28mm. Earthquake secure. Available in Black and Silver.



Product Code **OMDWF-B/S-100**

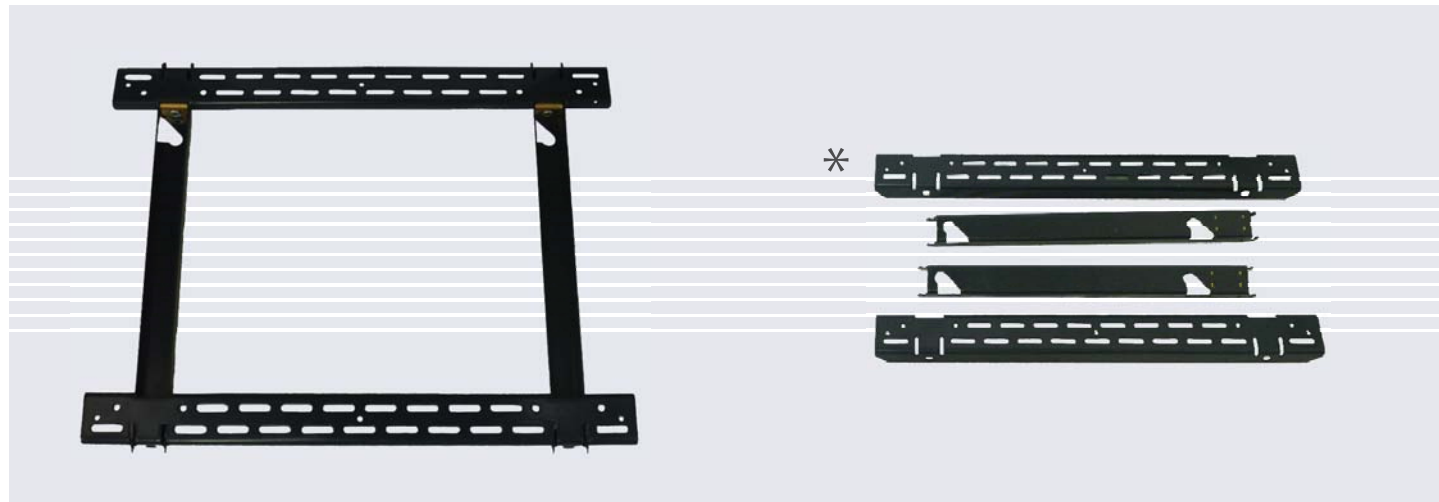


**17" < 32" FLAT SCREENS UP TO 50KG**

Idea for recessed displays, this flexible mount exceeds VESA disciplines in 100, 150 and 200 sizes. This 2 piece mount is only 20mm deep. Once the back plate is fitted to the wall, the screen may be attached from the top, left or right hand side, with only 15mm of clearance. Screw attachment and an additional locking bar secures and makes this mount earthquake proof. Available in Black and Silver.



Product Code **OMDWF-B/S-200**



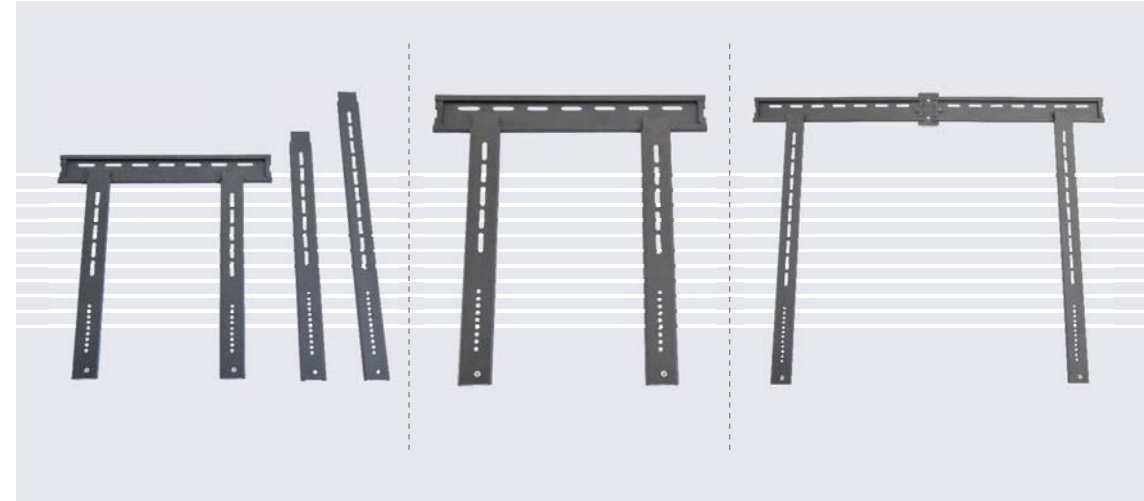
**COMMERCIAL FIXED PORTRAIT / LANDSCAPE DISPLAY MOUNT**

Suitable for any display unit using 400 x 300mm centres. Originally designed for active signage housings. Accommodating both landscape and portrait orientations without obscuring the rear of the display. Inter-locking frame assemblies to provide a 20mm deep cost effective secured solution. Available in Black.

\* Four separate pieces when broken down.



Product Code **OMDWF-B-400 LP**



**32" < 100" ULTRA THIN FIXED MOUNT**

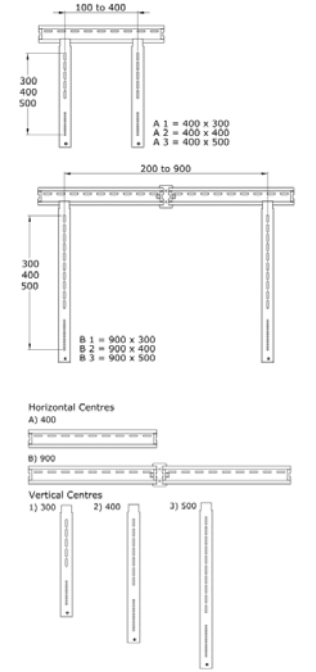
This is an ultra thin, 10mm thick, fixed display mount suitable for all new generation screens and incorporating cam actuated lock ensuring secure fixture. Portrait and landscape orientation available through a wide range of configurations. Loads up to 40kg. Screen fixing centres between 300 < 500 vertically and 200 < 900 horizontally. The 10mm wall offset facilitates flush installations of new screens without the need for expensive wall reconstruction. Available in Black.

**Configuration Table**

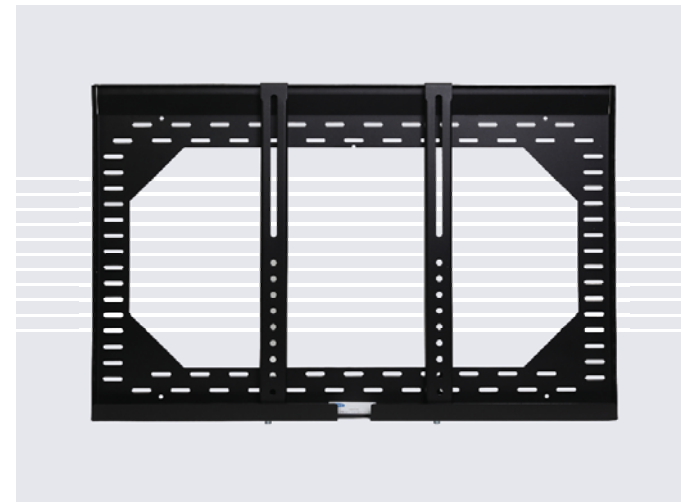
From the configuration table choose your size of mount



Product Code **OMDWF-(A1)**



Vertical Mounting Centres	Horizontal Mounting Centres	
	400mm	900mm
300mm	A1	B1
400mm	A2	B2
500mm	A3	B3

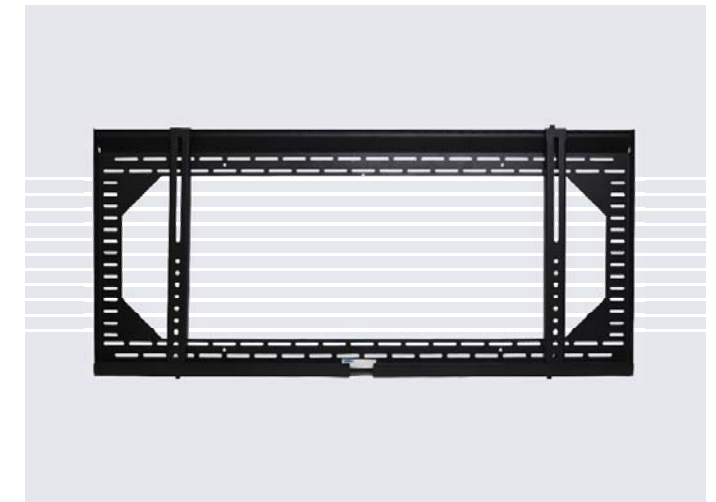


**37" < 52" FIXED DISPLAY WALL MOUNT**

This well proven standard mount provides exceptional holding power, exceeding 100 kg, whilst only needing a mounting lift of 15mm and a wall offset of 30mm. Screen fixing centres between 200 < 725mm horizontally and 100 < 425mm vertically. Secure option: An auxiliary locking bar may be optionally purchased to enhance theft resistance: "It makes it really hard to steal" Available in Black and Silver.



Product Code **OMDWF-B/S-700**

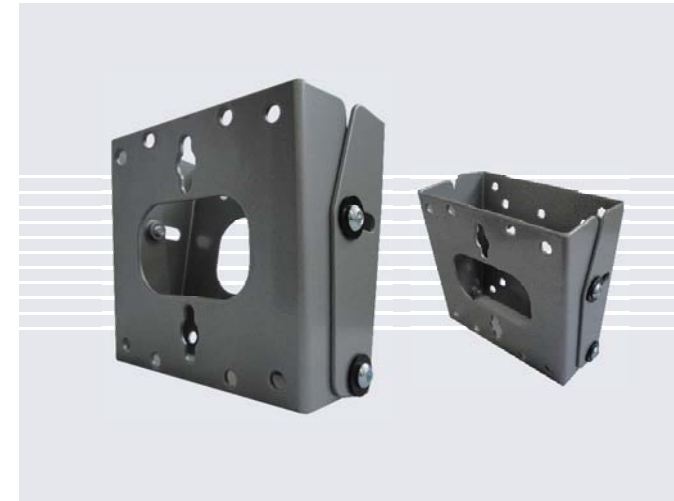


**60" < 100" FIXED DISPLAY WALL MOUNT**

This mount meets all the mounting needs of big screens. Integrated security features provides peace of mind. Screen fixing centres between 200 < 995mm horizontally and 100 < 425mm vertically. Loads up to 200kg. Secure option: An auxiliary locking bar may be optionally purchased to enhance theft resistance: "It makes it really hard to steal" Available in Black and Silver.



Product Code **OMDWF-B/S-1000**



### **SMALL TILT BRACKET**

This simple small bracket, makes for the perfect solution for wall mounting a small display. It offers mount points for VESA 75 and VESA 100 compatible screens. Will tilt -5 < 15 degrees. Weighs 0.7kg, but will hold a weight of up to 20kgs. Available in silver only.



Product Code **OMDWT-S-100**

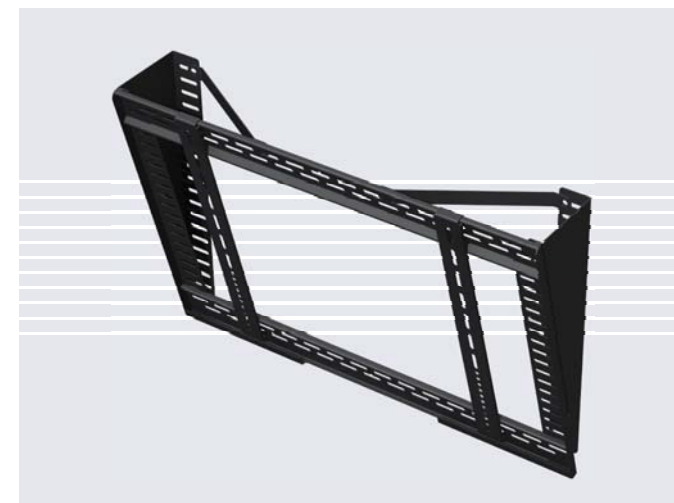


### **32" < 52" TILT DISPLAY WALL MOUNT**

This secure tilt mount fits, all screens with fixing centres between 200 < 590mm horizontally and 200 < 390mm vertically. A choice of fixed angles allows optimized positioning without creepage. Ideal for high mounted applications where access is limited. Loads up to 50kg. Available in Black or Silver.



Product Code **OMDWT-B/S-700**

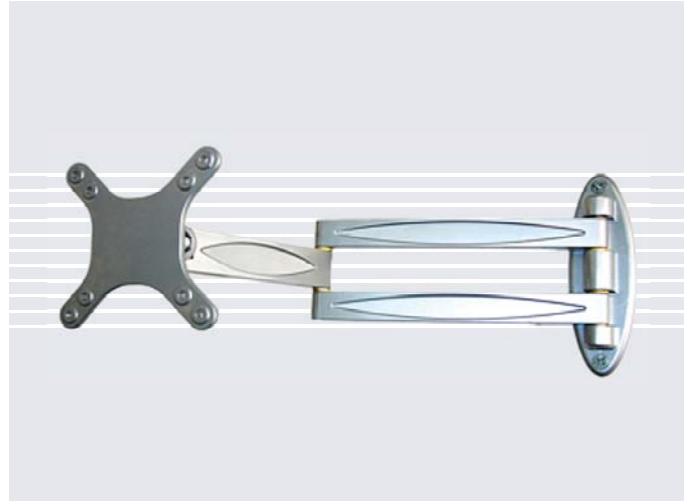


### **60" < 100" TILT DISPLAY WALL MOUNT**

This secure tilt mount fits, all screens with fixing centres between 200 < 995mm horizontally and 200 < 425mm vertically. A choice of fixed angles allows optimized positioning without creepage. Ideal for high mounted applications where access is limited. Loads up to 50kg. Available in Black or Silver.



Product Code **OMDWT-B/S-1000**

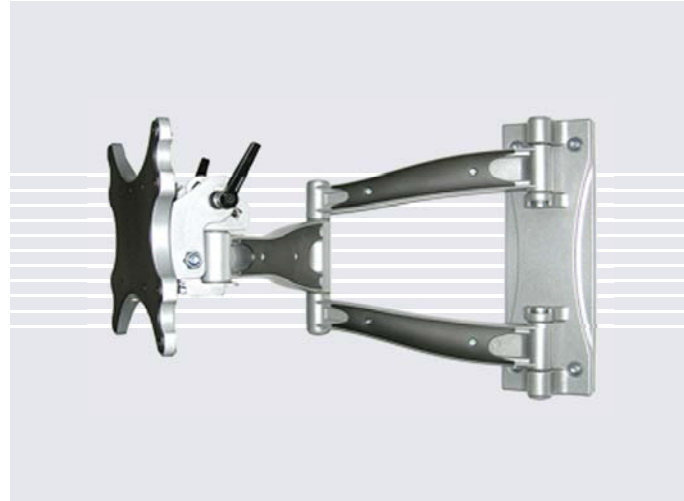


**13" < 26" VESA 75/100, WALL SWING ARM < 12KG**

Double swing tilt arm for VESA 75/100 mounting centres. Suits 13" < 26" displays up to 12kg, fast install, fully assembled with extensive screw kit, strong and secure, small wall offset of 50mm when closed, 390mm fully open.



Product Code **OMDWA100**

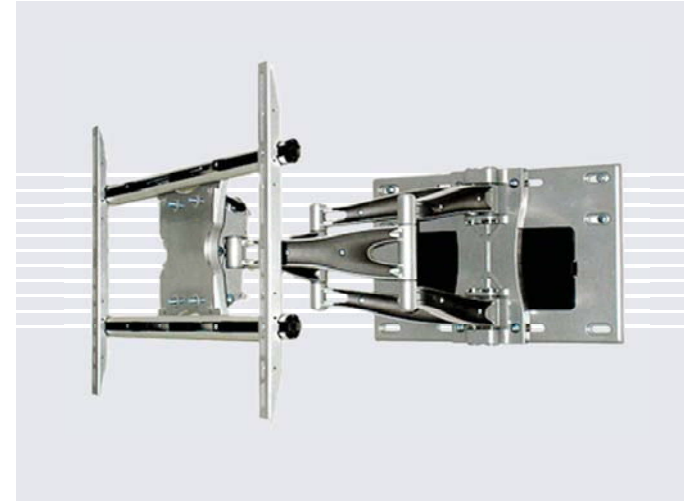


**32" < 50" VESA 100/200, WALL SWING ARM < 45KG**

Double swing tilt arm for VESA 100/200 mounting centres. Suits 32" < 50" displays up to 45kg, fast install, fully assembled with extensive screw kit, strong and secure, small wall offset of 128mm when closed, 680mm fully open.



Product Code **OMDWA300**

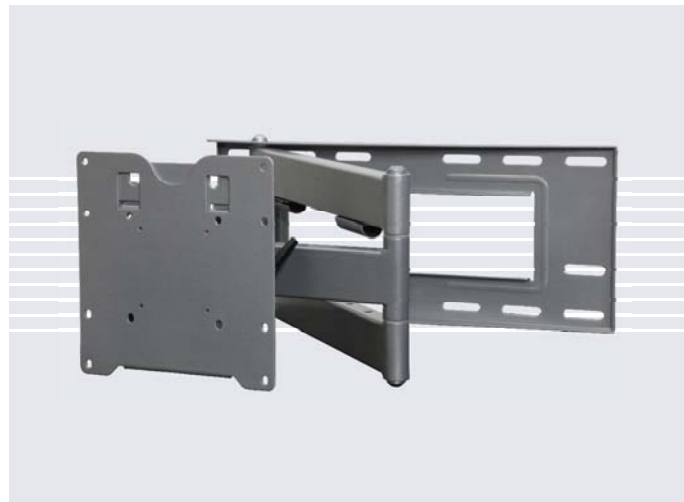


**42" < 100" ADJUSTABLE MOUNT SIZE, SWING ARM < 85KG**

Double swing tilt arm for screen fixing centres between 135 < 835mm horizontally and 60 < 610mm vertically. Suits 42" < 100" displays up to 85kg, fast install, fully assembled with extensive screw kit, strong and secure, wall offset of 190mm when closed, 690mm fully open.



Product Code **OMDWA500**

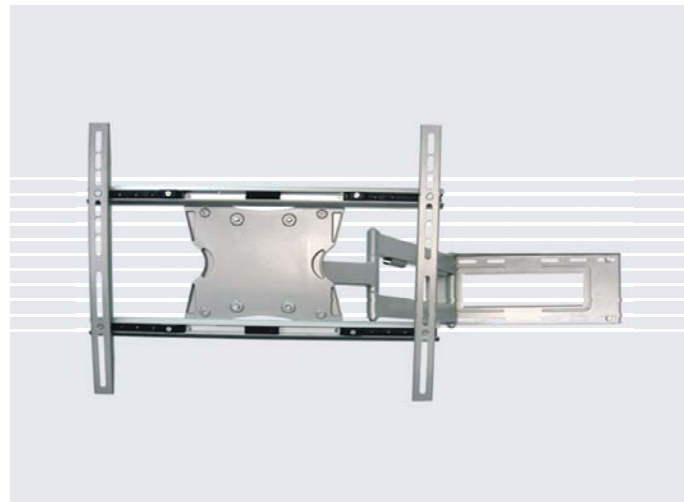


**32" < 52" VESA 100/200, WALL SWING ARM < 35KG**

Double swing tilt arm for VESA 100/200 mounting centres. Suits 32" < 52" displays up to 35kg, fast install, fully assembled with extensive screw kit, strong and secure, small wall offset of 96mm when closed, 700mm fully open.



Product Code **OMDWA200**



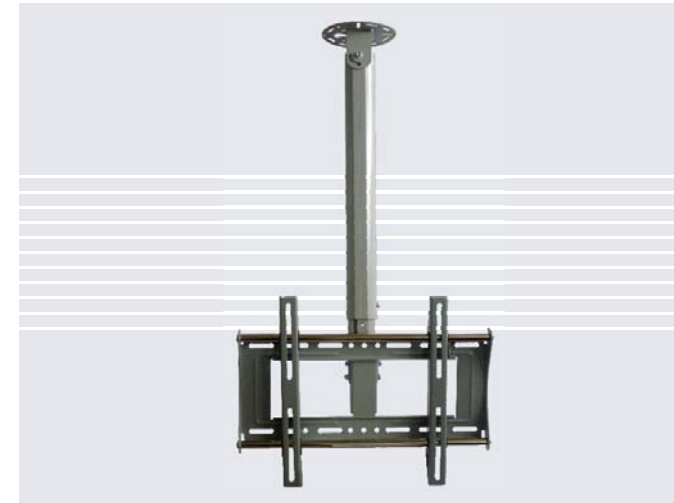
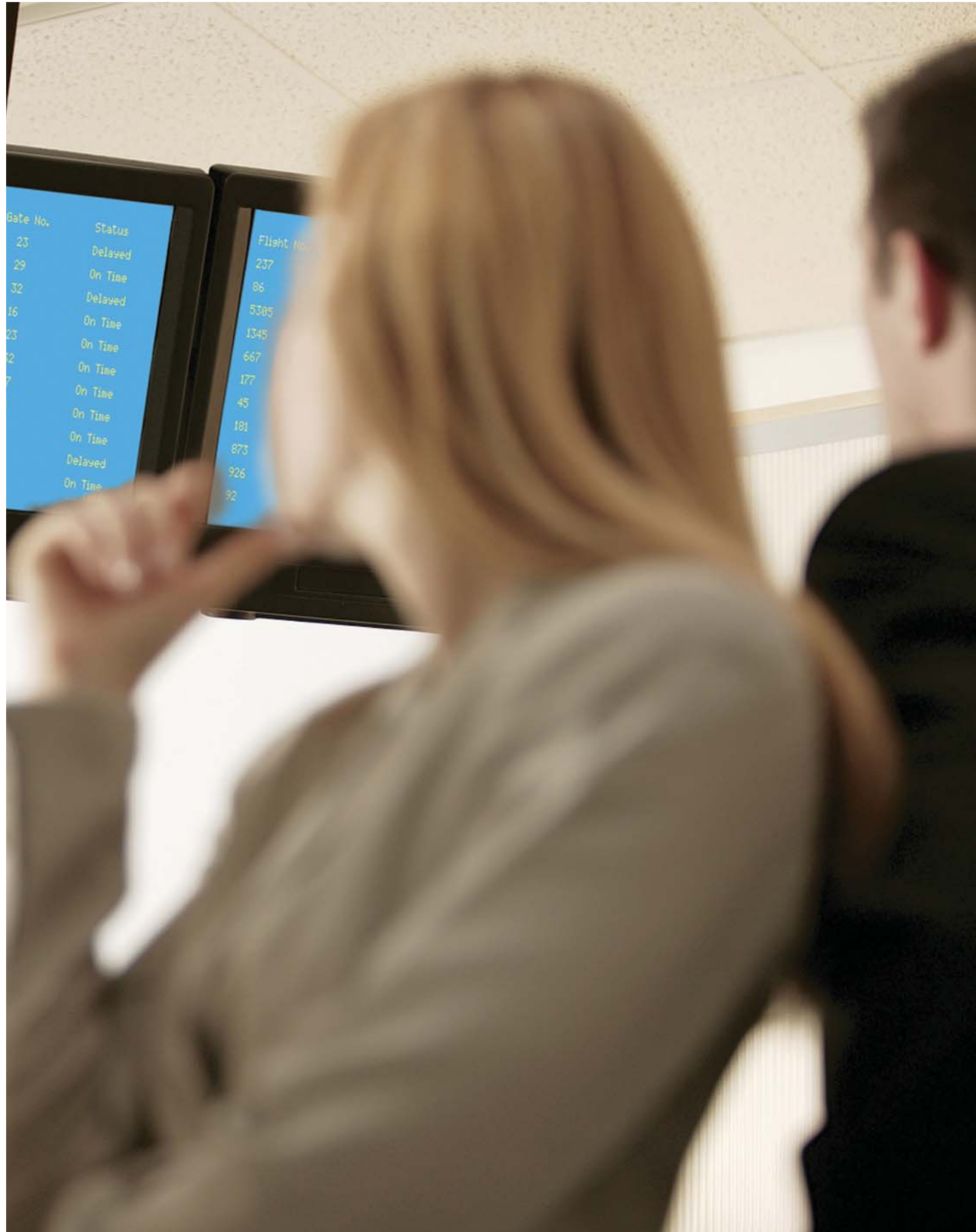
**32" < 57" ADJUSTABLE MOUNT SIZE, SWING ARM < 55KG**

Double swing tilt arm for screen fixing centres between 200 < 700mm horizontally and 60 < 500mm vertically. Suits 32" < 57" displays up to 55kg, fast install, fully assembled with extensive screw kit, strong and secure, wall offset of 128mm when closed, 750mm fully open.



Product Code **OMDWA400**





**23" < 32" TELESCOPIC CEILING SINGLE DISPLAY TILT MOUNT**

Suitable for commercial applications. This single tilt ceiling mount, suits screen attachments; 72 < 426mm horizontally and 70 < 330mm vertically. Loads up to 30 kg. The extendable telescopic pole allows flexibility of screen position for a variety of ceiling heights or user adjustable to suit audience needs. Available in Silver.



Product Code **OMDCX-S**



**37" < 50" LANDSCAPE TELESCOPIC CEILING TWIN DISPLAY MOUNT**

Suitable for commercial applications in public spaces, this twin tilt ceiling mount, suits screen attachments; 200 < 695mm horizontally and 200 < 425mm vertically. Loads up to 80 kg. The extendable telescopic pole allows flexibility of screen position for a variety of ceiling heights; 430mm adjustment range from drops above 700mm. Tidy presentation with a simple and secure screen attachment that gives peace of mind. Available in Black or Silver.



Product Code **OMDCX-B/S-700 L**



### **BENCH DISPLAY SWIVEL STAND**

Designed and built in NZ. Screen fixing centres between 100 < 760mm horizontally and 100 < 570mm vertically.

This swivel base stand allows the screen placement within an entertainment centre by removing the wasted space, underneath the screen, caused by standard bases. The ultra thin base allows the display to be positioned 15mm above the mounting surface.

Customizable height for commercial applications with an intrigal locking clamp secures the screen to the stand, substantially increasing security.

Base & riser colour - B/S: B = black, S = silver



Product Codes: Available in 6 combinations to suit all screens.

#### **OMDBS-B/S-064**

Screen fixing centres between 100 < 560mm horizontally and 100 < 360mm vertically.

#### **OMDBS-B/S-065**

Screen fixing centres between 100 < 560mm horizontally and 100 < 470mm vertically.

#### **OMDBS-B/S-066**

Screen fixing centres between 100 < 560mm horizontally and 100 < 570mm vertically.

#### **OMDBS-B/S-084**

Screen fixing centres between 100 < 760mm horizontally and 100 < 360mm vertically.

#### **OMDBS-B/S-085**

Screen fixing centres between 100 < 760mm horizontally and 100 < 470mm vertically.

#### **OMDBS-B/S-086**

Screen fixing centres between 100 < 760mm horizontally and 100 < 570mm vertically.



### **PRESENTATION MOBILE STAND**

Designed and built in NZ, this presentation/teleconference trolley allows quick setup on a stable platform using large diameter casters for easy lift and inter-room movement.

The unit has a top mounted camera shelf and incorporates an equipment shelf with an additional liftout laptop shelf for local presentations.

Integrated trolley handles allow simple movement in confined spaces and the bifurcated vertical extrusion frame allows convenient cable management and storage.

Suitable for 32 to 50" landscape mounted displays.

An intrigal locking clamp secures the screen to the stand, substantially increasing security.

Colour choice S = silver



Product Codes: Available in 6 combinations to suit all screens.

#### **OMDPS-S-064**

Screen fixing centres between 100 < 560mm horizontally and 100 < 360mm vertically.

#### **OMDPS-S-065**

Screen fixing centres between 100 < 560mm horizontally and 100 < 470mm vertically.

#### **OMDPS-S-066**

Screen fixing centres between 100 < 560mm horizontally and 100 < 570mm vertically.

#### **OMDPS-S-084**

Screen fixing centres between 100 < 760mm horizontally and 100 < 360mm vertically.

#### **OMDPS-S-085**

Screen fixing centres between 100 < 760mm horizontally and 100 < 470mm vertically.

#### **OMDPS-S-086**

Screen fixing centres between 100 < 760mm horizontally and 100 < 570mm vertically.



**PROJECTOR CAGE**

Designed and built in NZ. Retrofit over OneMount extendable projector ceiling brackets. No need to remove your mount, projector or cables.

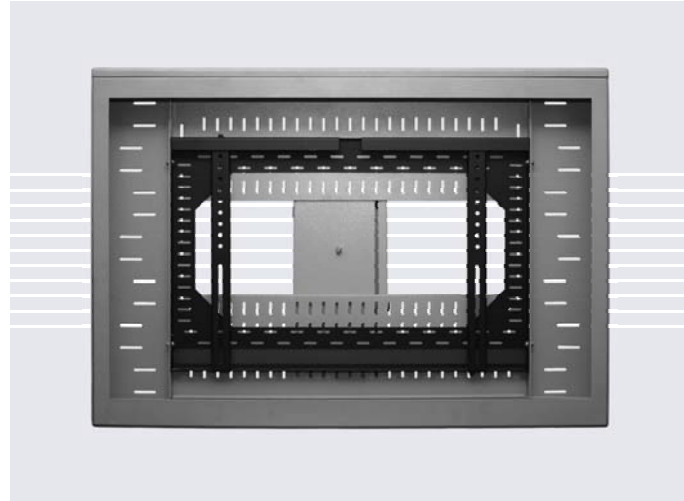
The cage secures and protects from theft and physical impact damage. Versatile enough for almost any setting.

Suitable for convention centres and rugged enough for your school gym or classroom.

Maximum Projector Dimensions:  
 Width - 400 / Depth - 370 / Height - 250  
 Colour choice W = white only



Product Code **OMJCC-W-002 S**



**SECURE DISPLAY FRAME**

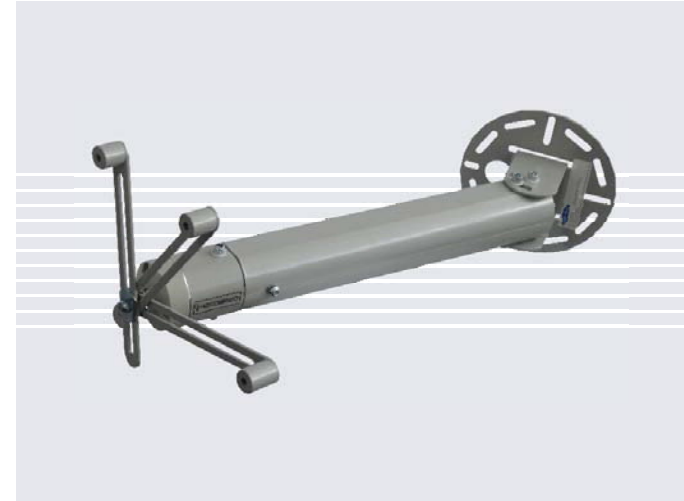
Designed and built in NZ for the Hospitality Industry, giving protection against theft, for use in areas of refined décor. Multiple levels of protection are incorporated into this novel low visibility design. Front escusion panels are created to suite individual displays, in colours to suit the surrounding environment.

Screen fixing centres between 200 < 725mm horizontally and 100 < 425mm vertically.  
 Available in 3 sizes: 42", 50" and 65"



Product Code:

- OMDWFSF-42** 42" size
- OMDWFSF-50** 50" size
- OMDWFSF-65** 65" size



**STANDARD TELESCOPIC CEILING MOUNT**

Appropriate to the boardrooms, convention centres, schools or home theaters. This family of 60mm diameter telescopic extrusions, provides a professional solution with a hidden height clamp. It's top plate allows attachment to sloping ceilings and trusses without packing.

Simple adjustment of the 3 arms (3mm) allow attachment to all projector fixings within a 335mm diameter circle.  
 Rated load < 12kg.

Extrusion cable cover & ceiling penetration cover included.



Product Code: # = Colour choice. **W** - white, **S** - silver, **B** - black  
**S** = Standard mount - 3 Arm, load < 12kg

- OMJCX-#-(040) S** 400 < 500mm drop
- OMJCX-#-(050) S** 500 < 770mm drop
- OMJCX-#-(070) S** 700 < 1170mm drop
- OMJCX-#-(110) S** 1100 < 1970mm drop



**INSTALL TELESCOPIC CEILING MOUNT**

Appropriate to the boardrooms, convention centres, schools or home theaters. This family of 60mm diameter telescopic extrusions, provides a professional solution with a hidden height clamp. It's top plate allows attachment to sloping ceilings and trusses without packing.

For larger projectors, the "INSTALL" head provides, 4 heavy duty steel arms (4mm) and clamp which fit to the telescopic extrusion. Simple to attach and balance the 4 arms fit all projector mounting points within a diameter of 415mm.  
 Rated load < 25kg.

Extrusion cable cover & ceiling penetration cover included.



Product Code: # = Colour choice. **W** - white, **S** - silver, **B** - black  
**I** = Install mount - 4 Arm, load < 25kg

- OMJCX-#-(040) I** 400 < 500mm drop
- OMJCX-#-(050) I** 500 < 770mm drop
- OMJCX-#-(070) I** 700 < 1170mm drop
- OMJCX-#-(110) I** 1100 < 1970mm drop



**TELESCOPIC CEILING MOUNT FOR COMMERCIAL INSTALLATION**

70mm diameter, professional fixed length mounts for auditoria and high stud halls. The top plate can be rigid or swivel from 0 < 100 degrees, accommodating angled ceilings, trusses and beam faces. The snap fit external cover provides perfect presentation and simple cabling. The 'INSTALL' head, using hidden fixings attaches simply and quickly and incorporates a safety cable ring.

Install mount, four arms, rated load < 25kg



Product Code: # = Colour choice. **W** - white, **S** - silver, **B** - black  
**I** = Install mount - 4 Arm, load < 25kg

- OMJCX-#-(600) I** 500 < 6000mm drop





**STANDARD 3 ARM FIXED CEILING MOUNT**

This universal bracket uses the "STANDARD" 3 arm head fitting, fitting all devices with mounting centres within a 335mm diameter circle. Rated load < 12kg, it is available in three drop heights and in three colours.



Product Codes: # = Colour choice. **W** - white, **S** - silver, **B** - black  
**S** = Standard mount - 3 Arm, load < 15kg

- OMJCF-#-(010) S** 100mm drop
- OMJCF-#-(015) S** 150mm drop
- OMJCF-#-(025) S** 250mm drop



**INSTALL 4 ARM FIXED CEILING MOUNT**

Short drop "INSTALL" rated mounts. Simple to attach and balance the 4 arms fit all mounting points within a diameter of 415mm. Rated load < 25kg.



Product Codes: # = Colour choice. **W** - white, **S** - silver, **B** - black  
**I** = Install mount - 4 Arm, load < 25kg

- OMJCF-#-(015) I** 150mm drop
- OMJCF-#-(025) I** 250mm drop



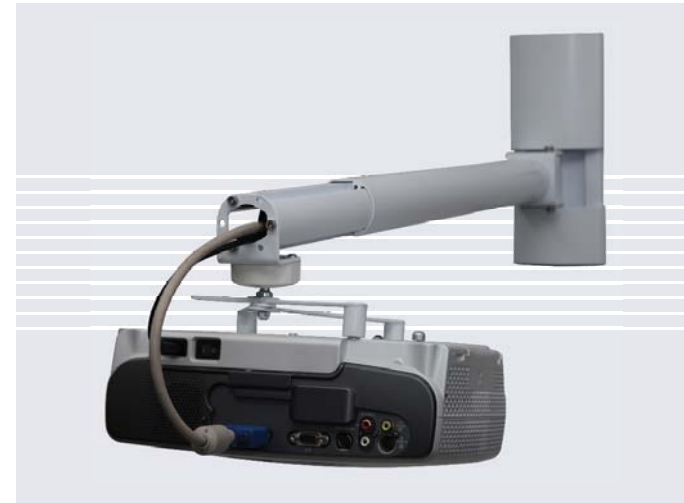
**FIXED WALL MOUNT**

This wall mounted universal bracket is available with either the "STANDARD" or "INSTALL" head fitted, making it suitable for domestic and professional installations where the throw is limited.



Product Codes: # = Colour choice. **W** - white, **S** - silver, **B** - black

- OMJWF-#-S** Standard mount, 3 Arm, load < 12kg
- OMJWF-#-I** Install mount, 4 Arm, load < 25kg



**EXTENDABLE SWING WALL MOUNT (FOR SHORT THROUGH PROJECTORS)**

Suitable for interactive white boards in courts, schools and college environments. This mount is available with either the "STANDARD" or "INSTALL" head fitted. The extendable swing arm allows the projector throw to be optimized for white board size and moved against the wall during periods of disuse. An additional feature allows a diagonal top brace to reduce vibration movement for projectors above 3kg.



Product Codes: **W** - white only  
**(070)** = 700 < 1100mm extendable arm  
**(110)** = 1100mm < 1970mm extendable arm

- S** - Standard mount, 3 arms, load < 12kg
- I** - Install mount, 4 arms, load < 25kg

- OMJWSX-W-(070)S/I**
- OMJWSX-W-(110)S/I**



**EXTENDABLE FIXED WALL MOUNT (FOR SHORT THROUGH PROJECTORS)**

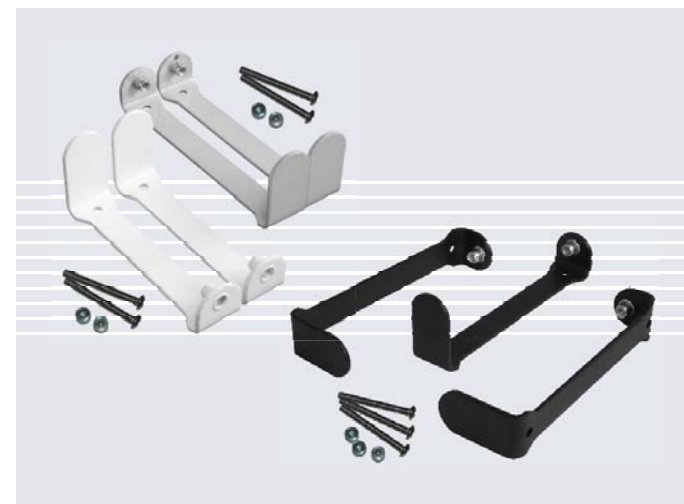
Suitable for interactive white boards in courts, schools and college environments. This mount is available with either the "STANDARD" or "INSTALL" head fitted. The extendable swing arm allows the projector throw to be optimized for white board size. An additional feature allows a diagonal top brace to reduce vibration movement for projectors above 3kg.



Product Codes: **W** - white only  
**(070)** = 700 < 1100mm extendable arm  
**(110)** = 1100mm < 1970mm extendable arm

- S** - Standard mount, 3 arms, load < 12kg
- I** - Install mount, 4 arms, load < 25kg

- OMJWFX-W-(070)S/I**
- OMJWFX-W-(110)S/I**



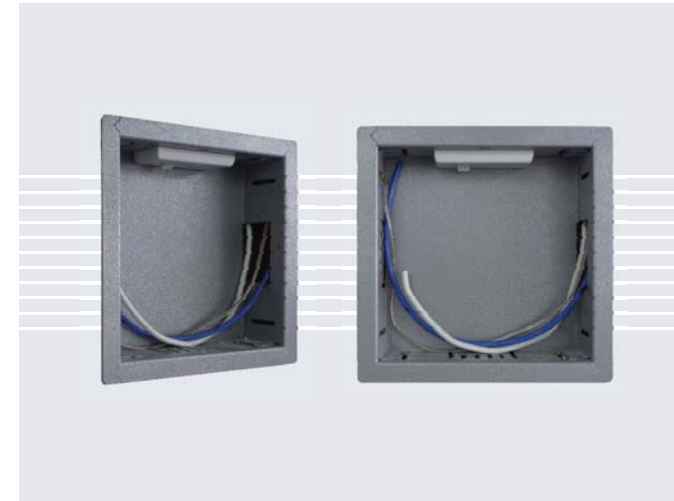
**PROJECTOR CLAMP ARMS**

This novel range of adapters attaches to any standard or install projector mount. It clamp mounts a projector that has no mounting fixings. Available in 3 sizes for projectors up to: 105, 135 and 165mm. Simple and quick to fit. Leaves no marks on the projector and may be easily removed after use. Available in black, white and silver



Product Codes: # = Colour choice. **W** - white, **S** - silver, **B** - black

- OMJCFGCC-#-(11)** 105mm drop - projector size
- OMJCFGCC-#-(14)** 135mm drop - projector size
- OMJCFGCC-#-(17)** 165mm drop - projector size



### WALL CABLE BOX

These in wall termination boxes provide a mount for a 230V socket and collection space for unsightly tails. 220mm<sup>2</sup> x 85mm deep, it mounts to stud or nog. Available in silver.



Product Code **OMWCB**



### WALL CABLE BOX WITH COVER

These in wall termination boxes provide a mount for a 230V socket and collection space for unsightly tails. 220mm<sup>2</sup> x 85mm deep, it mounts to stud or nog. With the addition of a front cover allows its visible use behind wall swing arm mountings. Available in silver.



Product Code **OMWCBC**



Photo 1



Photo 2

### BASE RACKS - STANDARD CONFIGURATION

ProRack meets the needs of excellence in racking systems for audio/home theatre, designed to save space and fit all media needs. Units are hand crafted and finished to exacting standards.

#### Features:

- Saves space
- Customizable
- Tidies all cables
- Adjustable shelving
- Robust construction
- Integrated media storage



Product Codes:

#### 900 SERIES:

- PRD900-B** 900mm High rack – Base and top supplied only
- PRD903-B** 900mm High rack – Base and top supplied, including 3 shelves
- PRD904-B** 900mm High rack – Base and top supplied, including 4 shelves
- PRD905-B** 900mm High rack – Base and top supplied, including 5 shelves

#### 12 SERIES:

- PRD1200-B** 1200mm High rack – Base and top supplied only
- PRD1203-B** 1200mm High rack – Base and top supplied, including 3 shelves
- PRD1204-B** 1200mm High rack – Base and top supplied, including 4 shelves
- PRD1205-B** 1200mm High rack – Base and top supplied, including 5 shelves
- PRD1206-B** 1200mm High rack – Base and top supplied, including 6 shelves



Photo 3

- Standard racks are available in 2 standard heights: 900mm and 1200mm. These comprise a base, the rear cable management guide, two side mounting rails, the base integrated power pack mounting bracket and top shelf.
- The centrally mounted vertical cable tray, along with the power pack support bracket, combines the need of convenience and accessibility.
- The advanced cable management allows signal and power cable separation, whilst keeping the surplus cable organised.

#### Additional shelves:

Supplied at an additional cost. See accessory options.

#### Standard colour:

B = Black - Stock Item  
 Other colours available on request at an additional cost  
 Colour choices: B - Black, G - Gold, S - Silver, R - Candy apple Red and RB - Royal blue.

Photo 1

All ProRacks are designed using the latest CAD techniques. All ProRack units are hand crafted and finished to exact standards. The base unit allows for a tuner amp, VHS, DVD and cable units.

Photo 2

Shelves are ventilated to allow air to circulate by natural convection to the equipment. The advanced cable management system allows signal and power cable separation, whilst keeping the surplus cable organised. The result is a clean and tidy appearance, allowing greater placement flexibility.

Photo 3

Our standard colour and stocked item for Base Racks is Satin Black. Other colours are available at an additional cost. Colours are black, gold, silver, candy apple red and royal blue.



Photo 1



Detail

### ACCESSORY OPTIONS

The racking system may be customised to accommodate special requirements. Your local OneMount Sales Representative will assist in creating a perfect solution to meet your needs. The below items are available at additional cost.

#### Colours

B = Black - Stock Item  
 Other colours available on request at an additional cost.

#### ROLLER BASE

Part number and description:

**PRARB** Roller Base

#### GRANITE BLOCK

Part number and description:

**PRAGBS** Granite block, top shelf position vibration isolation, requires standard shelf, PRA 430.

#### SHELVES

- Shelves may be added at any time to meet the changing standards and hardware demands.
- Shelves are ventilated to allow air to circulate by natural convection to the equipment.
- Shelves support up to 60kg each and where the rack is loaded to less than 80kg, low profile rollers can be fitted to ease access.
- As each shelf can be placed in 25mm increments, full utilisation of the rack is achieved allowing a wide variety of equipment sizes.

Part number and description:

**PRA430-B** 430 mm deep cantilever shelf, black

**PRASSFFAT10-A** Sliding Shelves

**PRACS430** Clamping shelf with hold down bar to secure equipment up to 168mm high

**PRAGSM** Glass shelf and mounts

### STORAGE/CD DRAWERS

- Storage drawers are stackable with adjustable dividers and hold 108 CD's or a combination of CD's, DVD's and remote controls.
- Drawers can have child locks fitted and form the basis of an organised and tidy collection.

Part number and description:

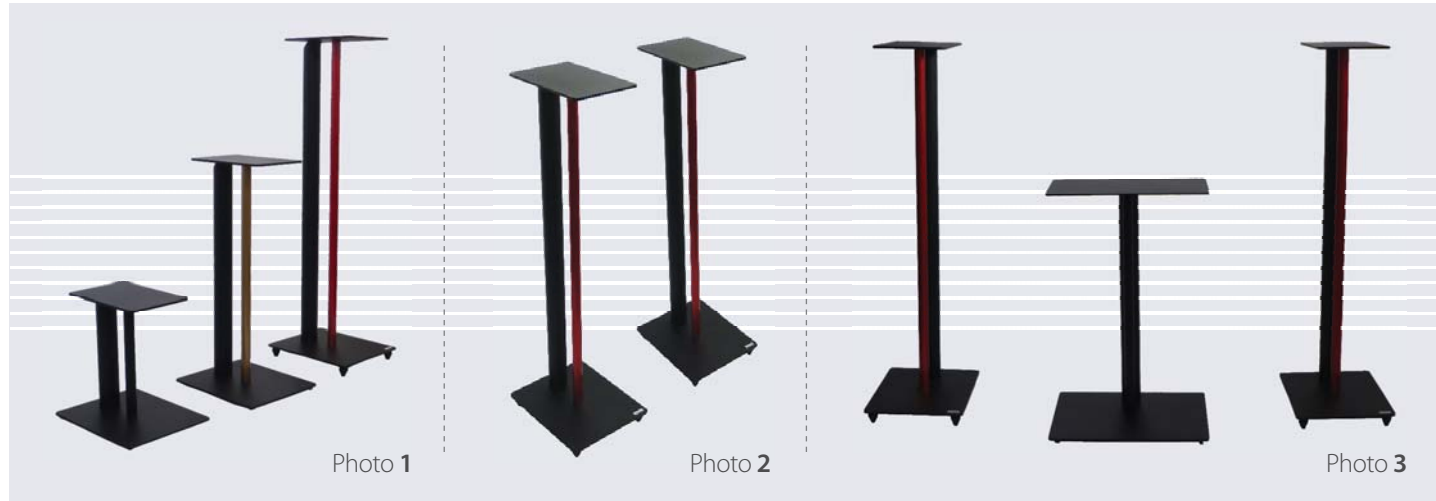
**PRACDD** Colour choices: B - Black, G - Gold, S - Silver, R - Candy apple Red and RB - Royal blue.

CD Drawer, up to 108 CD's, including top shelf

**PRACDDCL** CD Drawer child lock

Photo 1 and detail

Mass damped granite block is supported on elastometrically isolated spheres to further isolate and remove mechanically conducted noise.



**SPEAKER STANDS**

- Cables are routed within the stand exiting below the top plate and have large entry and exit holes to allow for both terminated and bare wire connection.
- Super spikes and soft spike feet options are available for in creased performance.
- The 8mm base plate creates a low centre of gravity aiding enhanced stability.
- The optional anti-resonance kit consisting of lead shot and seals, provides for the ultimate in dead mass speaker stand dampening.
- Front vertical bar of speaker stands available in black, gold, silver, candy apple red and royal blue.

Part number and description:

- PRASS300** Speaker stand 300mm high, one pair
- PRASS600** Speaker stand 600mm high, one pair
- PRASS900** Speaker stand 900mm high, one pair
- PRACSS300** Centre speaker stand, 300mm high
- PRACSS600** Centre speaker stand, 600mm high

**FEET**

- The four feet/rollers are 40mm wide each, so as to spread the load and avoid marking varnished floors.
- Three types of feet are available: timber/varnished floor feet, 40mm diameter low pressure gliders, soft spikes feet with a 5mm nose radius for the softer floors and super spike with points to pierce, formed from in verse ellipses to maximise vibration isolation.

Part number and description:

- PRAFT** Protective timber/varnished floor feet, set of 4

Photo 1

Speaker stands in three height options: 300mm, 600mm and 900mm

Photo 2

All speaker stands come in our standard and stocked colour - Satin Black. Other colours can be accommodated at an additional cost.

Photo 3

Centre speaker stand in two heights 300mm or 600mm.



**COMMERCIAL OPTIONS & ACCESSORIES**

Part number and description:

- PRCMA 19-60** 19" adaptor for 600mm
- PRCMA 19-90** 19" adaptor for 900mm
- PRCMA 19-12** 19" adaptor for 1200mm

These full height adaptors allow complete flexibility of equipment mounting, can be used with all shelf types. Includes 2 fans and thermostat

- PRCFAJR6-7** ProRack jumper rings, sold as pairs, vertical jumper rings attach to the rear mounting frame
- PRCFVS19-43** Commercial low profile shelf with front safe edge
- PRCFVS19-43** Domestic shelf with soft front face 20mm thick. Black or Silver
- RPS1933-1** 1 RU Height, 330mm depth of cantilever shelf, zintec
- RPS1933-2** 2 RU Height, 330mm depth of cantilever shelf, zintec
- RPS1943-2** 2 RU Height, 430mm depth of cantilever shelf with sides fixing holes, zintec
- RPS1943-3** 3 RU Height, 430mm depth of cantilever shelf with sides fixing holes, zintec
- RPS1943-4** 4 RU Height, 430mm depth of cantilever shelf with sides fixing holes, zintec
- PRCRS-1** Rear support bracket for the above shelves fitted to Mid Atlantic racks, sold as pairs
- PRCSM** Laptop sliding mount
- PRCAP-60** Screw cover dressing cap for 60cm
- PRCAP-90** Screw cover dressing cap for 90cm
- PRCAP-12** Screw cover dressing cap for 120cm

Photo 1

Commercial ProRack adaptors available in 600mm, 900mm and 1200mm. These full height adaptors allow complete flexibility of equipment mounting, can be used with all shelf types. Includes 2 fans and thermostat.

Many custom engineered solutions are readily available with lead times varying from 2 to 4 weeks. OneMount Ltd reserves the right to modify, change the design, appearance and operation of any and all products shown within this catalogue. All products shown within this catalogue is covered by 1 or more patents or registered designs. OneMount is a member of the Cable Ways group of companies © Cable Ways Ltd 2010 (Date of publication: January 2010)



12 Lansford Crescent, Avondale 0600

PO Box 60011 Titirangi 0642

Auckland, New Zealand

**Ph** + 64 9 820 5220 **Fax** + 64 9 820 6220

**Web** [cable-ways.co.nz](http://cable-ways.co.nz)